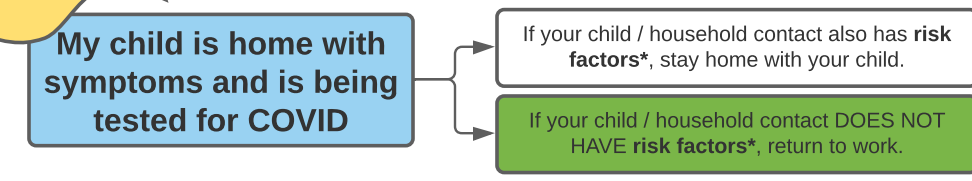
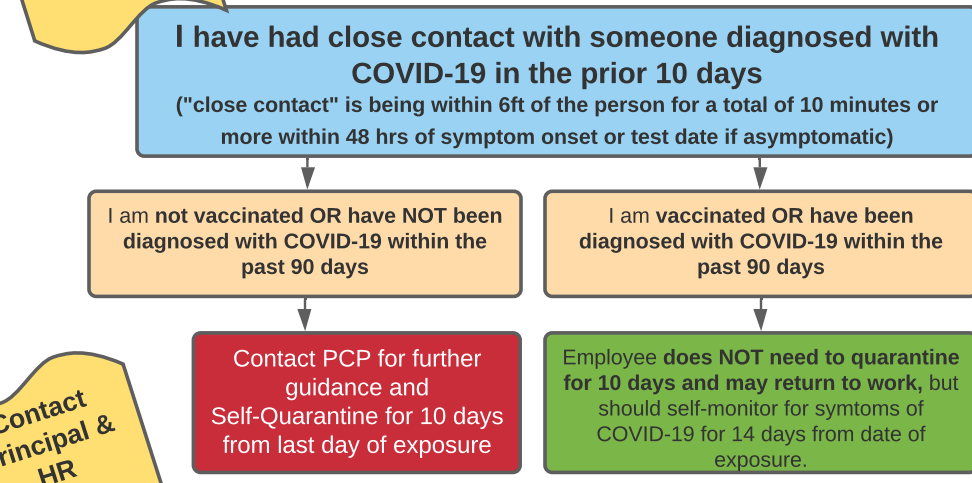
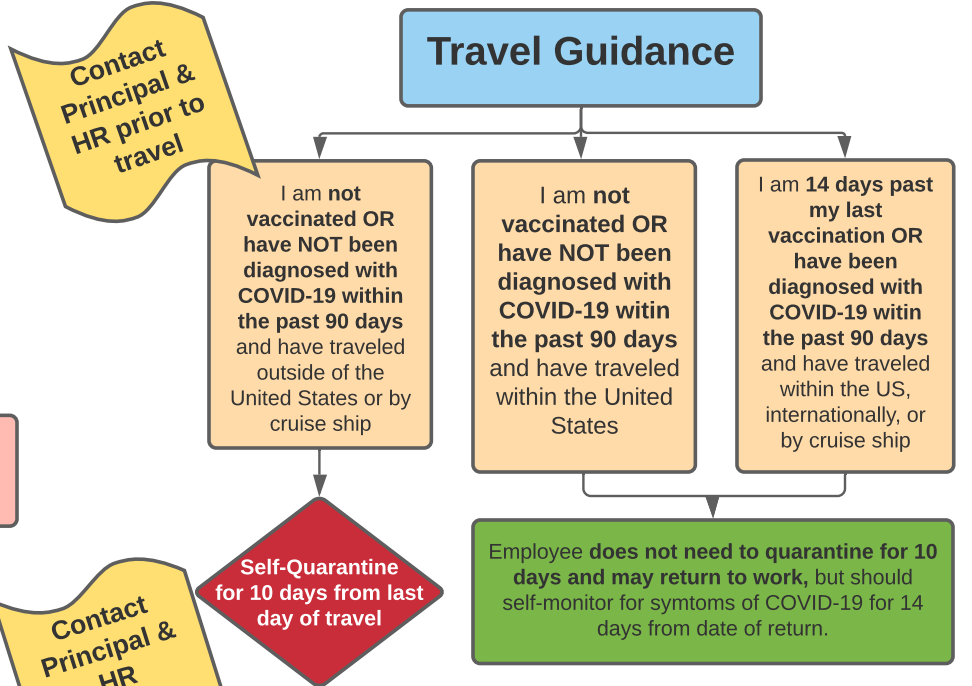
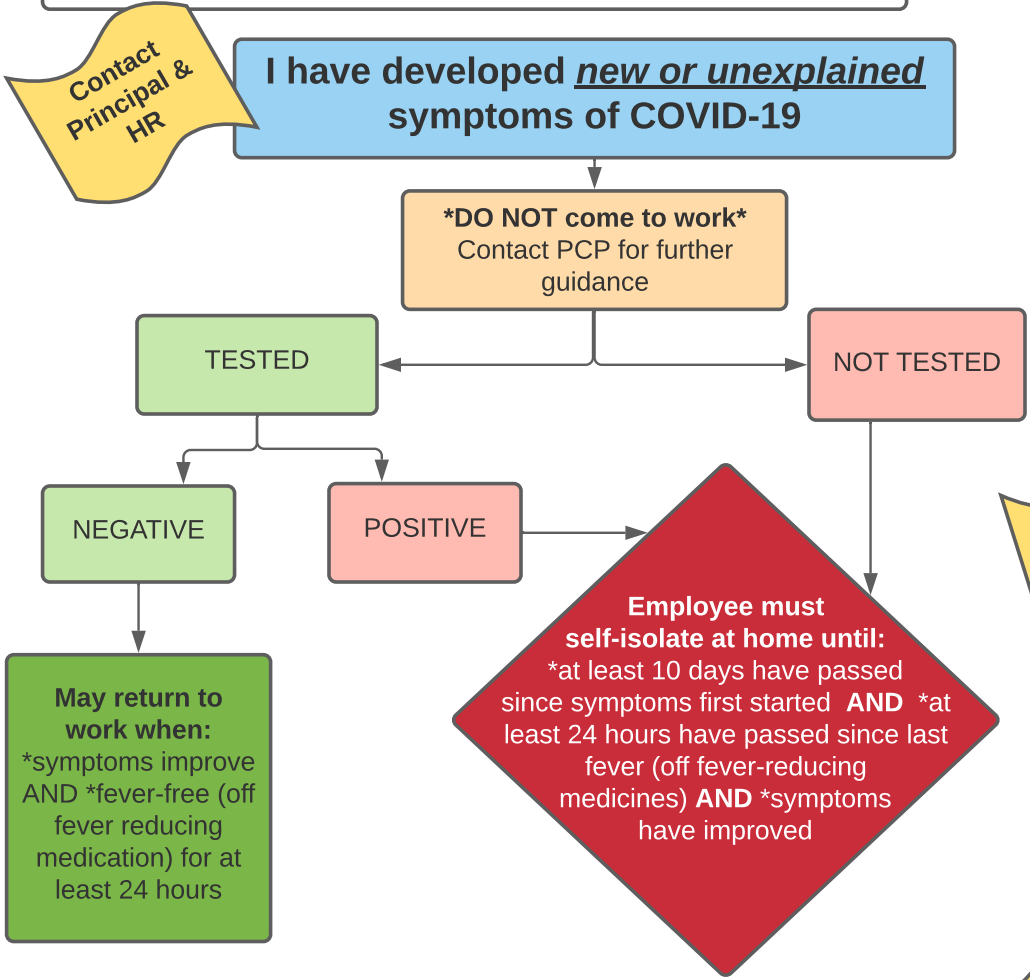


**COVID-19 Screening Guidance**  
A Roadmap for ConVal School District Employees



**Self-Quarantine:** Applies to people who have been potentially exposed  
**Self-Isolation:** Applies to people who are sick

If an infectious household member is **unable to isolate away from others**, those within the household will need to isolate with that person for 10 days, then self-quarantine for 10 more days after isolation for illness ends. **(10 days self-isolation + 10 days self-quarantine = 20 days total)**

**\*\*Employee CANNOT test out of 10 day travel or close contact quarantine with a negative COVID-19 test\*\***

**\* Risk Factors for COVID-19 exposure include close contact to a person with COVID-19 or travel outside of the United States or by cruise ship**